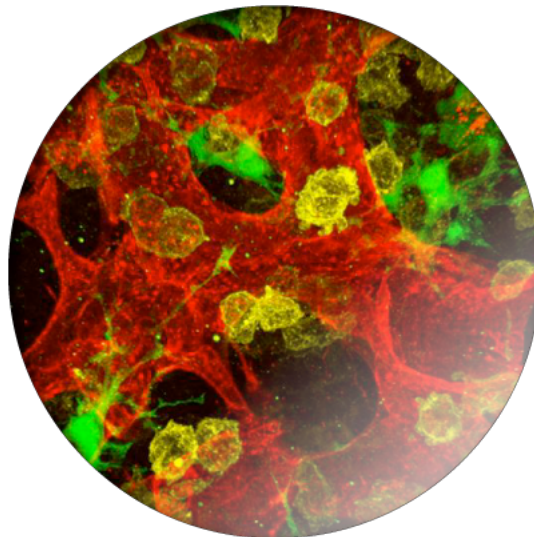


# Lund-Kumamoto Hematopoiesis Meeting



Supported by JSPS Core-to-core program

“Integrative approach for normal and leukemic stem cells”

April 21, 2023

BMC A12 meeting room, Lund University

# Program

Presentation time: LU 15min, KU 20min (including Q&A)

- 09:00      Opening remarks: Kenichi Miharada (KU/LU)
- 09:05      Charlotta Böiers (LU)
- 09:20      Nicholas Leigh (LU)
- 09:35      Ewa Sitnicka Quinn (LU)
- 09:50      Göran Karlsson (LU)
- 10:05      Jonas Larsson (LU)

Short break

- 10:30      Hitoshi Takizawa (KU)
- 10:50      Tatsuya Morishima (KU)
- 11:10      Kenichi Miharada (KU/LU)
- 11:30      Cristian Bellodi (LU)
- 11:45      Paul Bourguine (LU)

Lunch

- 13:00      David Bryder (LU)
- 13:15      Terumasa Umemoto (KU)
- 13:35      Alban Johansson (KU)
- 13:55      Sho Kubota (KU)
- 13:15      Closing remarks: Jonas Larsson (LU)
  
- 14:30      Photo shooting and Fika (A12 lunch space)

## Participants:

Cristian Bellodi, PhD	PI, RNA and Stem Cell Biology lab (LU)
Charlotta Böiers, MD, PhD	PI, Developmental Lymphopoiesis and Leukemia lab (LU)
Paul Bourguine, PhD	PI, Bone Organ Modelling and Regeneration lab (LU)
David Bryder, PhD	PI, Developmental Hematopoiesis lab (LU)
Alban Johansson	PhD student, Stem Cell Stress lab (KU)
Göran Karlsson, PhD	PI, Stem Cells and Leukemia lab (LU)
Sho Kubota, PhD	Assis.Prof., Transcriptional Regulation in Leukemogenesis (KU)
Jonas Larsson, MD, PhD	PI, Stem Cell Regulators lab (LU)
Nicholas Leigh, PhD	PI, Regenerative Immunology lab (LU)
Kenichi Miharada, PhD	PI, Proteostasis in Stem Cells (KU)/Stem Cell Metabolism (LU)
Tatsuya Morishima, MD, PhD	Lecturer, Stem Cell Stress lab (KU)
Ewa Sitnicka Quinn, PhD	PI, Lymphoid Development and Regulation lab (LU)
Hitoshi Takizawa, PhD	PI, Stem Cell Stress lab (KU)
Terumasa Umemoto, PhD	PI, Hematopoietic Stem Cell Engineering lab (KU)